



# ISRM Pathway

*Tuesday 6<sup>th</sup> February 2024*





# An Introduction to ISRM

*Let's recap on the essentials of what makes our programme special.*

## Our Mission Statement:

‘The **International School RheinMain** aims to guide young people on their unique journey of understanding what it means to be a human being in the 21st century. We aspire to develop **inquiring, knowledgeable** and **considerate** scholars, who endeavour to progress and innovate our world for the betterment of all.





# ISRM Structure

*Let's recap on the essentials of what makes our programme special.*

**ISRM is a school programme that follows the International Baccalaureate (IB).**

- MYP 1 (S1/Grade 6)
- MYP 2 (S2/Grade 7)
- MYP 3 (S3/Grade 8)
- MYP 4 (S4/Grade 9)
- MYP 5 (S5/Grade 10)
- DP 1 (S6/Grade 11) – September 2024

**ISRM has now grown to 120 students.**





# What is the IB?

*As the International School RheinMain celebrates its first year of success, let's recap on the essentials of what makes our programme special.*

## What is the IB?

*The International Baccalaureate® (IB) offers a continuum of international education. The programmes encourage both personal and academic achievement, challenging students to excel in their studies and in their personal development.*

*Every school authorized to offer IB programmes is known as an IB World School.*

## IB Aims:

*“At our heart we are motivated by a mission to create a better world through education” (IBO).*

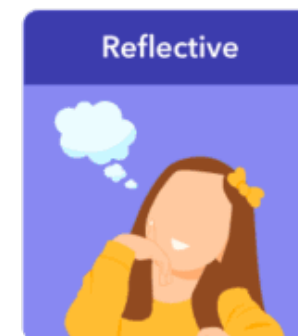
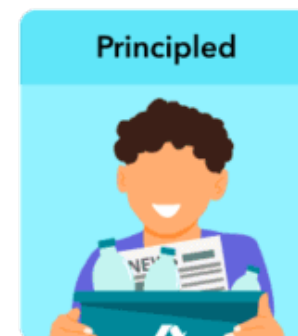
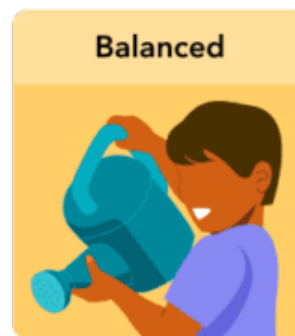
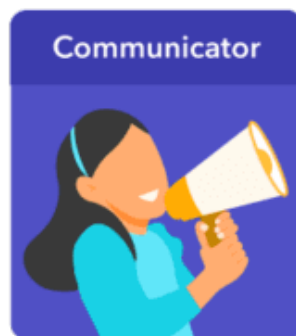
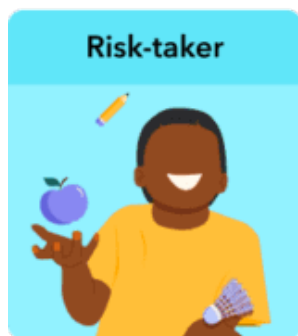
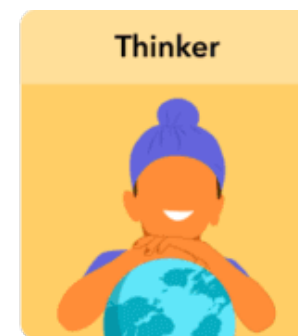
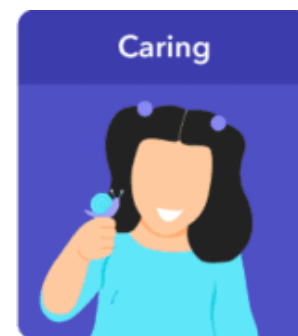
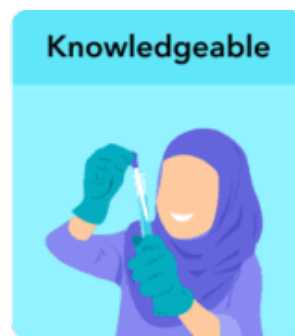
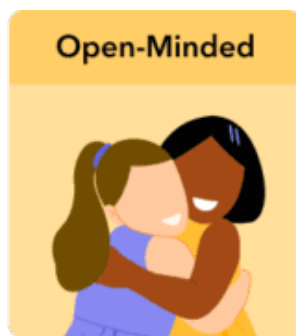
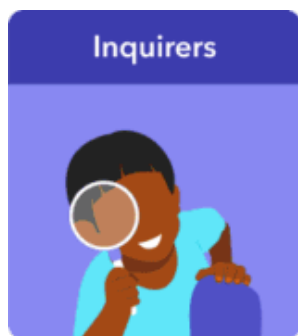
- Promote a peaceful world through **international mindedness, multilingualism** and a focus on **global engagement** & meaningful **service** with the community.*
- Develop an inquiring, knowledgeable and caring community ready for the 21<sup>st</sup> century.*



# The IB Learner Profile

*What makes the IB special?*

**The IB Learner Profile is part of every aspect in school life. IB students become: -**

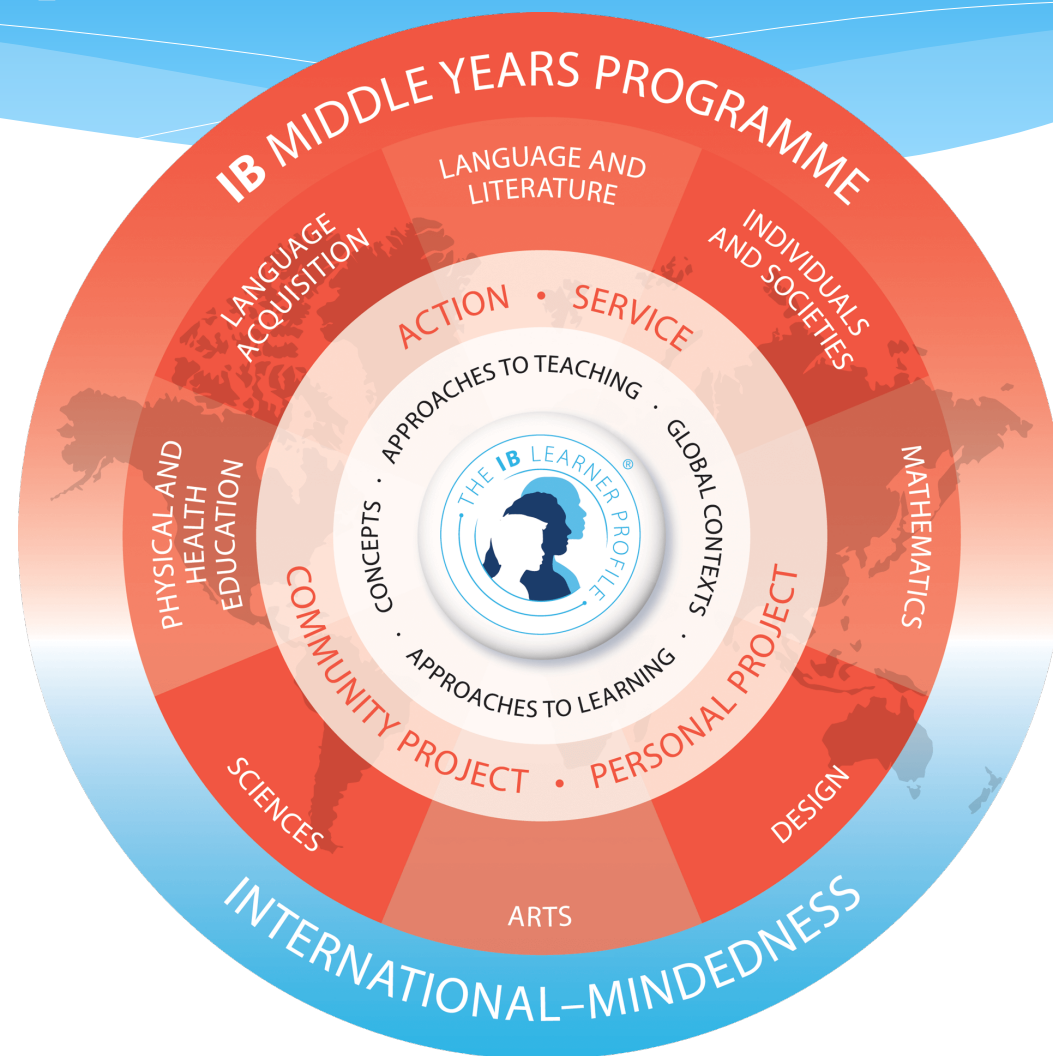




# What does ISRM offer?

*ISRM offers students with unique opportunities for growth and development.*

- *An IB Community*
- *Social and Emotional Learning*
- *Service Learning*
- *Intercultural awareness*
- *Conceptual Understanding*
- *Interdisciplinary Learning*





# Approaches to Learning

*ATLs are skills that students develop throughout their inquiries and explorations.*

## APPROACHES TO LEARNING

How can I be an effective learner?

### COMMUNICATION



#### INTERACTION

I can exchange thoughts, messages and information effectively through interaction.



#### LANGUAGE

I can read, write and use languages to communicate information effectively.

### SOCIAL



#### COLLABORATION

I can work effectively with others.

### RESEARCH



#### INFORMATION LITERACY

I can find, interpret, judge and create information.



#### MEDIA LITERACY

I can interact with media to use and create ideas and information.

### SELF-MANAGEMENT



#### AFFECTIVE SKILLS

I can manage my own state of mind, concentrate and be focused. I can learn from mistakes and problems.



#### ORGANIZATION SKILLS

I can manage my time and tasks effectively. I use technology well.



#### REFLECTION

I can (re)consider the process of learning. I can choose and use effective ATL skills.



#### CRITICAL THINKING

I can analyse and evaluate issues and ideas.

### THINKING



#### CREATIVE THINKING

I can generate new ideas and perspectives.



#### TRANSFER

I can use knowledge and skills in new contexts.



# SERVICE



# AS

# ACTION

*Service is for and with others.*  
Through service learning, **I learn to:**



Become more aware of my **strengths** and **areas for growth**.



**Challenge myself** to develop new skills.



**Discuss, plan** and **evaluate** action with my peers.



**Persevere** in action, *keeping up the effort* even when things are challenging.



**Collaborate** effectively with others.



Develop **international mindedness** by *engaging with the world, using different languages & understanding other cultures*.



Consider the **ethical implications** of my actions, *thinking carefully about right and wrong*.



# MYP Certificate

*ISRM prepares students for the Diploma Program and beyond.*

**ISRM offers a prestigious award called the MYP Certificate that allows students to earn the Mittlere Reife certificate.**

- **eAssessment** – a mix of 2-hour on-screen examinations (Language and Lit, Language Acq, I&S, Maths, Sciences, IDU) and ePortfolios (Design, Arts and PHE).
- **Personal Project** - is an opportunity in MYP 5 to demonstrate and express individual interests and values in their final MYP year and present it to the school community.

Onscreen examination subjects	Mathematics	Language and literature	Sciences
	Individuals and societies	Interdisciplinary	Language acquisition
Coursework ePortfolio	Physical and Health Education	Design	Arts
MYP personal project	Internally marked, externally moderated (dynamic sampling)		

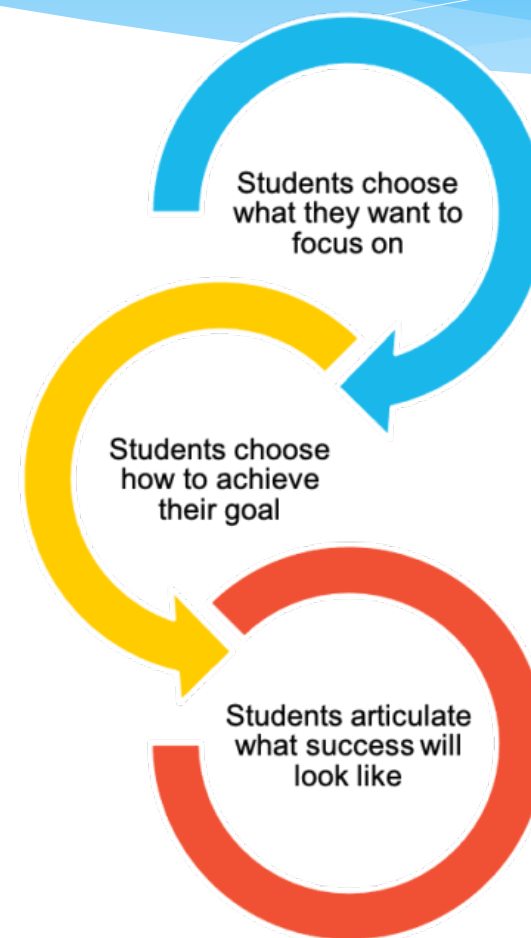


# Personal Project

*ISRM prepares students for the Diploma Program and beyond.*

**The Personal Project is the culmination of student growth in the MYP.**

- *For the Personal Project, each MYP 5 student must develop a personal project independently, which is externally validated by the IB.*
- *Producing a truly personal and creative piece of work over an extended period of time demonstrates their ability to conduct independent work.*





# IBO Accreditation

*This academic year, the IBO will visit ISRM to verify it as an IB World School.*

**ISRM is now an official IB World School.**

*This means that ISRM is able to provide all of the fantastic features of the Middle Years Programme, including the eAssessment, Personal Project and MYP Certificate.*

*In September 2024, the Diploma Programme will begin, and our first cohort of IB students will graduate*





# IB Diploma Programme

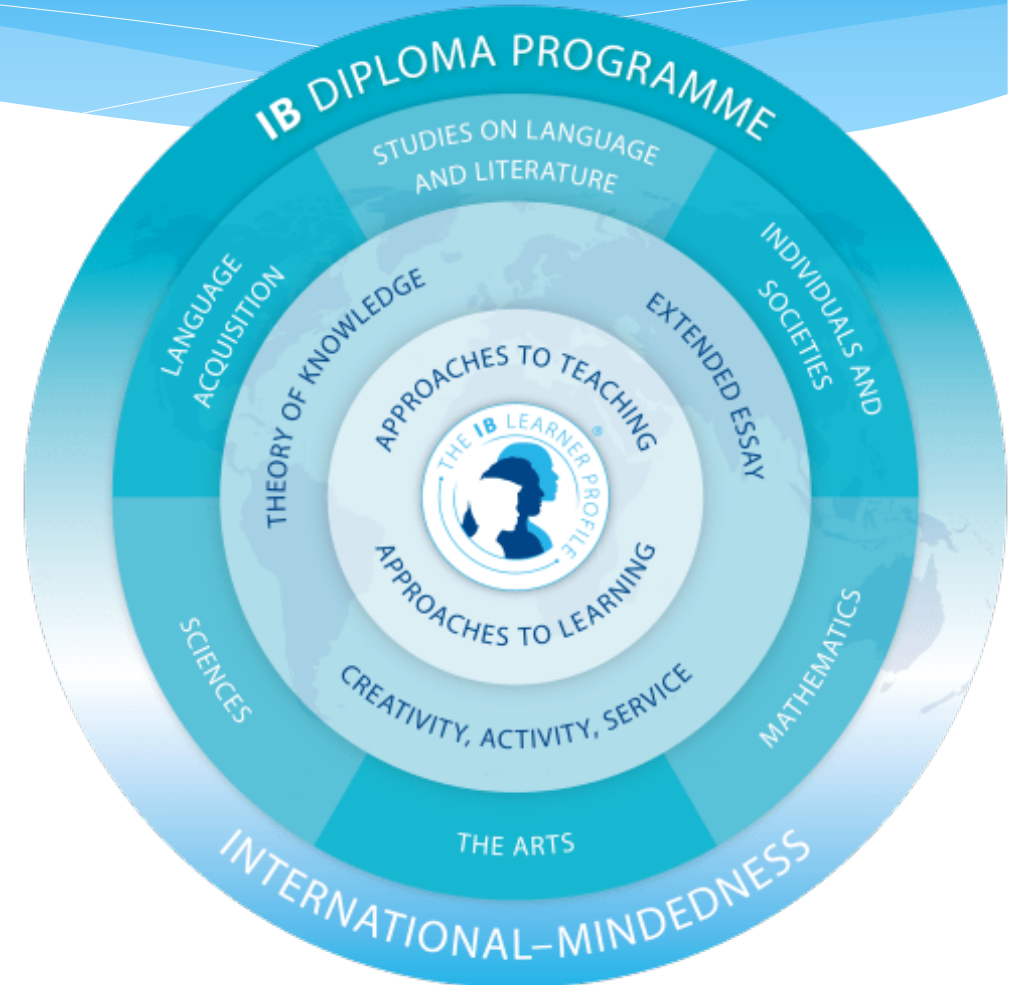
*In September 2024, ISRM will introduce the Diploma Programme.*

## The Diploma Programme:

The International Baccalaureate Diploma Programme (IBDP) is a two-year educational programme primarily aimed at 16-to-19-year-olds in 140 countries around the world.

The programme provides an **internationally recognised qualification for entry into higher education** and is **recognized by many universities worldwide**.

The DP is a rewarding and academically challenging programme of education that prepares students for success at university and life beyond study.



# Moving Forward

*We are excited to hear your thoughts and perspectives on our visionary programme.*

## **Visit our website:**

<http://www.is-rm.eu>

## **Sign-up to our newsletter:**

*Sign up to ESRM Weekly to get frequent updates on ISRM and our implementation of the programme.*

## **Contact Us:**

*If you have any questions, concerns or queries, please don't hesitate to contact us via:*

### **Email:**

- ISRM Applications/Queries – [applications-isrm@es-rm.net](mailto:applications-isrm@es-rm.net)

### **Telephone:**

ESRM Office: (06101 505660)

## **Further information :**

- IB Programme - <https://www.ibo.org/>
- IB Recognition in Germany: <https://www.daad.de/en/study-and-research-in-germany/plan-your-studies/recognition-ib-diploma/>
- Kultusminister Konferenz: [https://www.kmk.org/fileadmin/veroeffentlichungen\\_beschluesse/1986/1986\\_03\\_10-Vereinbarung-Baccalaureate-Dipl.pdf](https://www.kmk.org/fileadmin/veroeffentlichungen_beschluesse/1986/1986_03_10-Vereinbarung-Baccalaureate-Dipl.pdf)
- Hessisches Kultusministerium: [https://kultusministerium.hessen.de/sites/default/files/media/ib-erkennung\\_leitfaden\\_2020.pdf](https://kultusministerium.hessen.de/sites/default/files/media/ib-erkennung_leitfaden_2020.pdf)
- Recognition of the IB - <https://www.ibo.org/university-admission/recognition-of-the-ib-diploma-by-countries-and-universities/>